

News Release

Laser Optics
Coated Prisms

2006
For Immediate Release

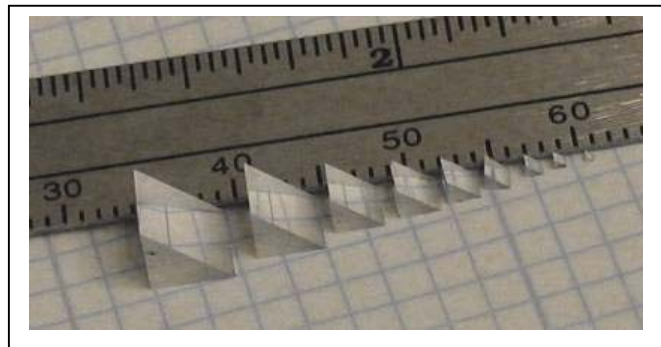
*From: Joel A. Kramer, Director of Sales
1-800-526-7560, ext. 17*

Reflective Coated Micro-Prisms from 0.5 mm to 5.0 mm from Stock

Boynton Beach, FL – Tower Optical Corp. has just announced the availability of a series of **micro-prisms with a reflective coated hypotenuse** and in-stock sizes from 0.5 mm to 5.0 mm for use with laser sources and imaging applications. The series MPCH are right angle, 45°-90°-45° prisms, with an Enhanced Aluminum coated hypotenuse.

The MPCH Series

These coated right angle prisms can be used to direct a beam at 90° degrees from the incident beam. They may also be used as a front surface mirror. The Tower Optical MPCH Series of micro prisms contains 9 members including 0.5 mm, 0.7 mm, 1.0 mm, 1.5 mm, 2.0 mm, 2.5 mm, 3.0 mm, 4.0 mm and 5.0 mm. The MPCH Series are manufactured from BK7 optical glass and the hypotenuse is coated with Enhanced Aluminum. They feature flatness of $\lambda/2$ @ 632.8 nm, with



surface quality of 40-20 and angular tolerance of ± 3 arc minutes. The finished size is one-half of a cube, such that all edges are of equal length. For example, the MPCH-0.5 is 0.5mm x 0.5mm x 0.5mm. Different coatings are available on a custom basis and include a wide variety of AR coatings for the prism legs and reflective coatings for the hypotenuse. The prisms can be customized to meet the exact optical requirements of the application.

Pricing and Availability

The Series MPCH prisms are available from Tower Optical Corp. for \$46 For the MPU-0.5 to \$40 for the MPU-5.0 in unit quantities with over a 35% discount for volume quantity. Small quantities are available from stock. For more information visit www.TowerOptical.com or contact Tower at 800-526-7560 or fax 561-740-2518, or email sales@TowerOptical.com.

###